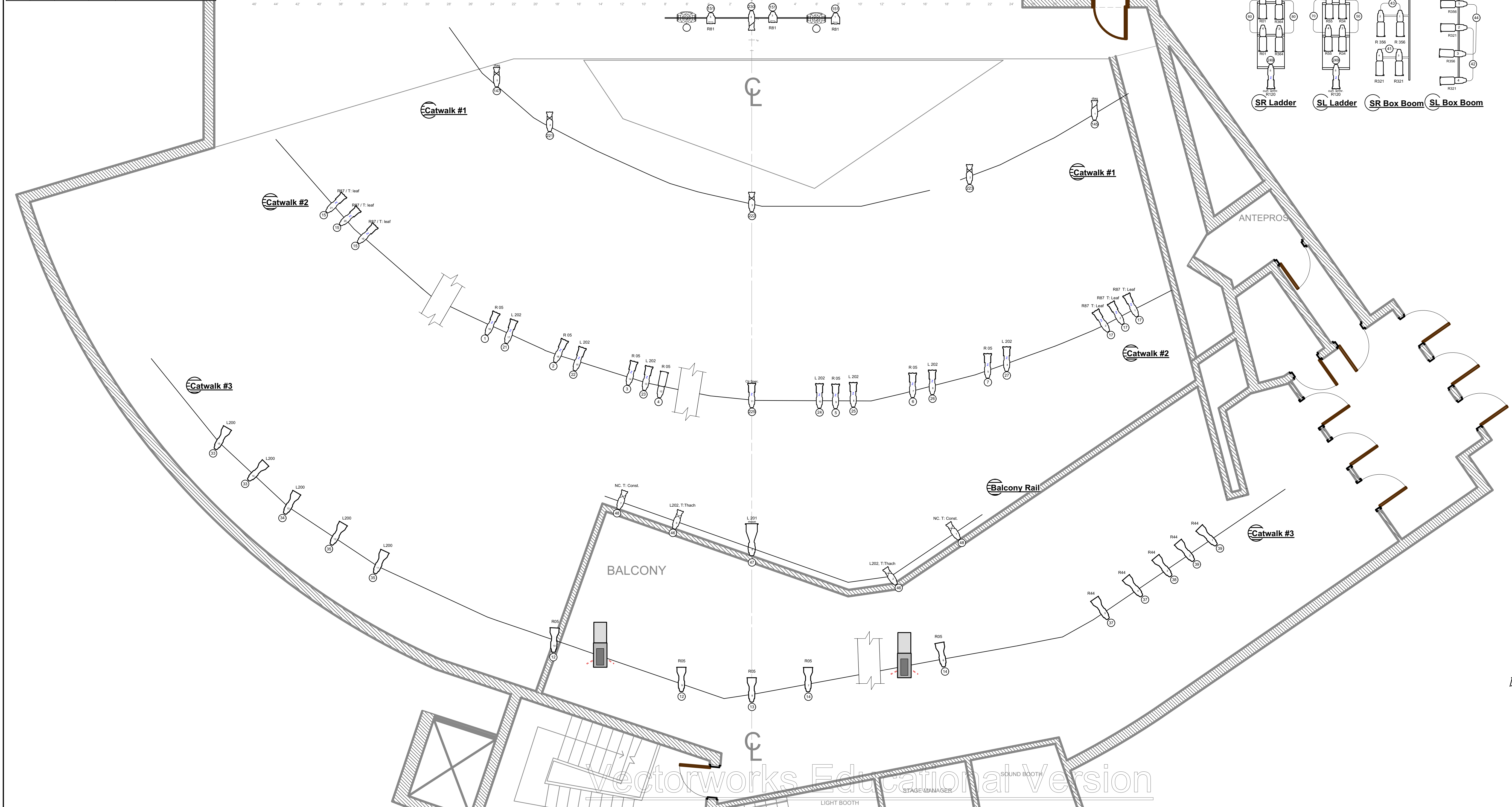
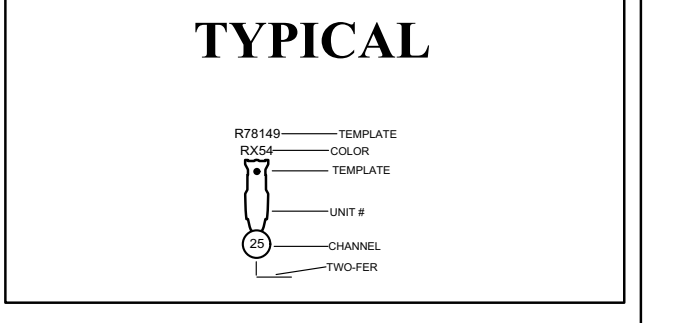


LINE	PIPE LENGTH	DM FROM PLASTER LINE	TRIM	LINE SCHEDULE
XX	39'-6"	32'-3"	TBD	CYC ELECTRIC - MOTOR
26	44'-0"	29'-1"		
25	45'-0"	27'-11"		RP SCREEN
24	45'-6"	27'-1"		BLACK OUT DROP
23	46'-0"	26'-3"		BLACK SCRIM
22	47'-0"	25'-4"		LEGS
21	47'-6"	24'-8"	TBD	BORDER
20	48'-6"	23'-11"		
19	49'-0"	22'-8"		
18	50'-0"	21'-4"	24'-0"	ELECTRIC #3
17	52'-6"	20'-8"		
16	53'-6"	20'-2"		LEGS
15	54'-6"	19'-3"	21'-0"	BORDER
14	55'-0"	18'-6"		
13	56'-6"	16'-10"	24'-0"	ELECTRIC #2 AUX
12	57'-6"	16'-2"		
11	58'-0"	15'-4"		TRAVELER
10	58'-6"	14'-6"		BORDER
9	59'-6"	13'-8"		
8	62'-0"	11'-9"	24'-0"	ELECTRIC #2
7	63'-6"	10'-9"	24'-0"	
6	64'-0"	10'-4"	21'-0"	BORDER
5	64'-0"	9'-6"		
4	65'-0"	8'-8"		LEGS
3	66'-0"	7'-10"		
2	70'-0"	7'-1"	20'-9"	BORDER
1	70'-0"	6'-4"		
0	70'-0"	5'-0"	24'-0"	BRIDGE PIPE B (LOWER)
FC	70'-0"	3'-0"	24'-0"	BRIDGE PIPE A (HIGHER)
		2'-4"		LEGS
		1'-6"		FRONT CURTAIN
		0'-0"		PLASTER LINE



KEY

Quantity	Fixture Type
1	1" SOURCE 4, 8' SW - HPL
2	2" SOURCE 4, 8' SW - HPL
3	3" SOURCE 4, 8' SW - HPL
4	4" SOURCE 4, 8' SW - HPL
5	5" SOURCE 4, 8' SW - HPL
6	15'-30' SOURCE 4 2x4m, 750W - HPL
7	ELAR 10 LED Par
8	ETC Source Four ParNet - HPL
9	Chauvet S02 Z
10	COLOR COMMAND 750W
11	Chauvet Zoom Tour 2
12	Chauvet Division C-AMPIC
13	ALTIMA VOTASER 400W - HT80224



- NOTES**
1. ALL UNITS SHOULD BE ON 18" CENTERS UNLESS OTHERWISE NOTED. CATWALKS CAN BE APPROXIMATE.
 2. ALL BARRELS TO BE RAN FULL IN AND ALL FRESNELS TO FULL SPOT AT LOAD-IN.
 3. - HAVE 200 EXTRA ETC SA CUTS OF R132 FRONT AVAILABLE AT FOCUS.
 4. ALL UNITS NEED SAFETY CHAINS.
 5. ALL TRIM HEIGHTS ARE APPROXIMATE AND WILL BE FINALIZED AT LOAD-IN.
 6. - FIRE RAG AS NEEDED AS PER RME REQUEST.
 7. - TWO-FER AS INDICATED.
 8. - R - ROSCO G - GAMA L - LEE
 9. - REP CYC COLORS ARE FINE AS LONG AS THEY ARE SATURATE RED, BLUE, GREEN AND AMBER GRAY CYC.
 10. - COLOR COMMAND CHANNELS INDICATED ARE INTENSITY. CYM-F SHOULD FOLLOW SUIT.
 11. - ROSCOCAN V18, ROSCOCAN S18, AND MAC 550 CHANNEL INDICATED = CONTROL.
 12. ONLY FIXTURES NOTED ON PLOT ARE USED IN PRODUCTION.

This Drawing Represents Design Intent and Concept
All specifications herein relate solely to the appearance of the lighting and not to matters of electrical or structural soundness and/or safety. The designer is not qualified to assess the electrical or structural appropriateness of the design. If any specifications are found to be incompatible with proper safety precautions, the designer shall make prompt modifications to the specifications in question.

Light Plot

edison
THEATRE

PLATE #
1
OF 1

SCALE: 3/16" = 1'-0"

Base Design and drawing by:
Jason Irons